

22nd Annual Greater St. Louis Safety & Health Conference

The Premier EHS Event for Professionals in the St. Louis Region

**Andre's Banquet Center
4254 Telegraph Road
St. Louis, MO 63129**

**Tuesday, October 7, 2025
8:00 a.m.—3:30 p.m.**



Keynote Speaker:**Dr. Charlie Cartwright**

Founder, The Company Culture Doctors

**The Heart of Safety: Why Culture, Not Compliance,
Brings People Home**

Every day in the U.S., approximately **14 workers lose their lives**, and over **27,000 suffer disabling injuries**—and despite decades of policy changes and billions of dollars spent, these numbers have barely moved. The truth? **Policies don't keep people safe. Culture does.**

In this powerful and transformative keynote, Dr. Charlie Cartwright challenges conventional approaches to safety and delivers a compelling blueprint for creating a **world-class safety culture** built on leadership, engagement, and a deep sense of belonging. It's not about lighting a fire *under* people; it's about lighting a fire *within* them.

Takeaways

- Understand the **4 fundamental behaviors** needed to build a culture of safety.
- Recognize the **factory settings** that drive poor safety decisions—and how to reset them.
- Learn to deliver a **safety message that sticks** and influences at every level of the organization.
- Gain tools to **overcome resistance**, increase engagement, and sustain momentum.
- See how companies have used this approach to reduce injuries by **56%** and work comp. claim costs by **89%**.



Dr. Charlie Cartwright is the founder of The Company Culture Doctors, a consulting firm based in the Kansas City area whose sole purpose is to bring out the best in leaders & their teams.

Before devoting his work full-time to The Company Culture Doctor, Dr. Charlie spent

over 20 years of his career in leadership within Fortune 500 companies. The practical lessons, insights, and operational excellence he gained during this time are priceless. His insights help business leaders achieve outstanding results by tapping into the inherent greatness of their people.

Conference Agenda

7:15 a.m. to 7:50 a.m.	Conference Check-In & Registration
7:50 a.m. to 8:00 a.m.	Opening Remarks
8:00 a.m. to 9:00 a.m.	Keynote Speaker <i>Dr. Charlie Cartwright</i>
9:00 a.m. to 9:30 a.m.	Exhibitor Viewing
9:30 a.m. to 10:15 a.m.	Breakout Session I
10:30 a.m. to 11:15 a.m.	Breakout Session II
11:30 a.m. to 12:15 p.m.	Breakout Session III
12:15 p.m. to 1:15 p.m.	Lunch (Provided) Exhibitor Viewing
1:15 p.m. to 2:00 p.m.	Breakout Session IV
2:00 p.m. to 2:30 p.m.	Final Exhibitor Viewing
2:30 p.m. to 3:30 p.m.	Closing Session

Page 3

Exhibitor Viewing 9:00 a.m. — 9:30 a.m.

Breakout Session I 9:30 a.m. — 10:15 a.m.

Aging Workforce Across Industries: A Panel Discussion



Chris Archer, *Partner Archer & Lassa LLC*

Christopher Lenarz, MD, *Excel Orthopedics*

Sheila Schmidt, CSP, ARM, *Safety & Risk Services Regional Manager, Missouri Employers Mutual*

How do we support seasoned professionals while making sure their knowledge isn't lost to time? This lively panel dives into the real-world challenges faced by an aging workforce and how organizations can better support them. We'll explore meaningful ways to value

Controlling High Energy

Jason Wernex, *Senior Leader, Health and Safety, Utilitra*

Serious injury and fatality rates have plateaued over the past 20 years in the construction industry. As the science of safety is expanding, organizations, researchers, and safety practitioners are working together to understand and tackle the challenges that lead to serious injuries and fatalities. In this session, we will explore serious injury causation and strategies for elimination. Participants will walk away from this session with resources to introduce or expand serious injury prevention efforts in their organizations.

The Good, Bad, and Ugly of Lithium-Ion Batteries

Tim Frankenberg, *Consulting Engineer, Ameren Corporate Safety*

This presentation will examine the everyday use of lithium-ion batteries, highlighting common exposure scenarios and the potential hazards associated with their operation. Attendees will gain a clearer understanding of the risks and safety considerations tied to this increasingly prevalent technology.



Horseplay Injuries- Are Workers' Comp Benefits Owed and How to Investigate the Injuries

Brad Young, *Partner, Harris Dowell Fisher & Young L.C.*

When workplace antics lead to injury, are benefits owed? This session examines the legal standards for compensability of horseplay-related injuries under workers' compensation law and outlines key steps for conducting effective investigations.

DEMO

Safe at Heights: Essential Fall Protection ABCs with Live Demo

Bo Solari, *Shur Sales*

Falls are a leading cause of workplace injuries and fatalities, making fall protection a critical aspect of any safety program. This session will introduce the ABCs of fall protection, offering essential insights into Anchor points, Body support, and Connecting devices. Attendees will learn key principles for selecting, inspecting, and using fall protection equipment. The session includes a live drop-truck demonstration by 3M Fall Protection, providing a hands-on experience that shows workers' what to expect and how to respond in fall scenarios.

Target Areas: Safety, Occupational Health and Safety. Basic.

Breakout Session II 10:30 a.m. — 11:15 a.m.**Outdoor Work and Dangerous Weather – How to Stay Safe****Kevin Deitsch**, *Warning Coordination Meteorologist, National Weather Service*

Weather or NOT... Join Kevin for an engaging session on current weather patterns and the hazards impacting our region. He'll share strategic practices for staying safe during severe weather—whether you're working indoors or outdoors. Learn how to prepare your team with the knowledge to recognize how severe weather forms, stay protected from the increasing

**Safety in the Field and Public Workspaces****Mason Keller**, *VP of Asset Protection, Schnuck Markets, Inc.***Matt Redmond**, *Director of Security, Schnuck Markets, Inc.*

This session focuses on the safety and security aspects of our roles, with an emphasis on effectively managing workplace situations that involve interactions with the public using verbal de-escalation. Attendees will gain practical insights into maintaining a secure work environment, responding to unexpected events, and promoting a culture of awareness and preparedness.

What is Your EAP?**A Panel Discussion: Moderator Brandon Anderson**, *AGC***Brian Bauer**, *Director EAP Services, H & H Health Care Services***Domini Montgomery**, *Director, Safety & Risk Management, Saint Louis Zoo***Rick Reams**, *Vice President Safety and Quality, Murphy Company*

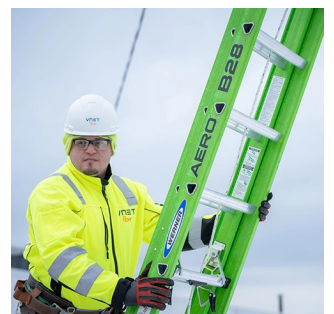
This panel discussion will explore the purpose, structure, and real-world application of Employee Assistance Programs (EAPs). Panelists will share how their organizations implement EAPs, the challenges they've encountered, and from the EPA's standpoint, how to best partner with organizations they serve. Best practices for promoting employee well-being through these programs will also be shared. .

Women at Work: Orthopedic Considerations of the Female Worker**Emily Whicker MD**, *Orthopaedic Surgeon, The Orthopedic Center of St. Louis*

This session examines the unique orthopedic challenges experienced by female workers, with a focus on how sex-specific anatomical and biomechanical factors influence injury patterns, diagnostic complexities, and recovery trajectories. Attendees will explore common work-related musculoskeletal injuries in women and gain insight into how occupational roles and biological differences intersect to impact clinical outcomes and return to work.

**DEMO****Ladder Safety****Chad Lingerfelt**, *Director of Training and Jobsite Safety & Security, ProDriven Global Brands*

Join Chad Lingerfelt, Director of Training & Jobsite Safety and Security. Chad will lead participants through a hands-on demonstration of ladder safety covering the latest in ladder innovation at Werner Co an industry leader for ladders. During the safety session Chad will cover the ABCDE of fall protection while using ladders and discuss the hierarchy of controls to eliminate or minimize the exposure to hazards while using ladders on job sites.



Breakout Session III 11:30 a.m. — 12:15 p.m.**Pulling Back the Curtain on Safety: Edison Theater Fall Protection**

Haley Coons, *Senior Project Manager, Oates Associates, Inc.*

Join Haley for an overview of an interior fall protection project at Washington University in St. Louis. Haley will walk through the process of assessing the existing theater for fall hazards into design of solutions/controls to address these hazards with oversight during construction and finally training of the theater staff on using the systems. The unique challenges faced during each phase of the project will be discussed and some lessons learned for future projects.

Recovery Friendly Workplace, Why Does It Matter?

Dr. Doug Swanson, *Field Specialist in Labor and Workforce Development, University of Missouri Extension*

Today's workplace has evolved, but many policies and attitudes around addiction and recovery have not. These outdated approaches now hinder recruitment and retention. This session explores how modern, recovery-informed practices can foster a more inclusive and

Safety Professional Reality: A Panel Discussion Moderator: Domini Montgomery, Saint Louis Zoo

Annie Grimshaw, *Safety Specialist, Schnuck Markets, Inc.*

Corey Hayes, *Safety Director, Alberici*

Mary Claire Hogan, *Safety & Risk Management Coordinator, Saint Louis Zoo*

Join this session for a dynamic panel discussion exploring the challenges faced by safety professionals at various stages of their careers. Panelists—from early-career practitioners to seasoned experts—will share insights, lessons learned, and evolving perspectives on the profession, offering a multi-faceted view of the safety landscape.

Selling Safety Across Sectors: A Panel Discussion

Moderator:

Retail Sector

Public Safety Sector

Utilities Sector

Explore how safety is viewed, prioritized, and communicated across different sectors. This session brings together insights from public agencies, regulatory bodies, and private industry to examine how each approaches safety—from compliance and culture to communication and cost. Gain a well-rounded understanding of what it takes to promote and “sell” safety effectively in any environment.

DEMO**Forklift Safety: A Hands-On Demonstration and Discussion of Safety and Best Practices****Crown Lift Trucks Team**

This session covers the essential elements of forklift safety, including safe operation practices, common hazards, and how to prevent incidents before they happen. Attendees will learn about proper inspection procedures, load handling, and navigating work environments with pedestrians and other equipment. Whether you're a seasoned operator or new to forklift safety, this session will reinforce key principles to help keep your workplace safe and compliant.

Lunch 12:15 p.m. — 1:15 p.m. OSHA Overview | Exhibitor Viewing |**OSHA Overview: What's New and What Matters**

Bill McDonald, CSP, OSHA Area Director, Greater St. Louis

Stay up to date on the latest developments from OSHA that impact our region. This session offers a clear and practical overview of current regulations, enforcement trends, and upcoming initiatives.

Breakout Session IV: 1:15 p.m. — 2:00 p.m.**Fleet Safety: A Panel Discussion Moderator: Aj Gajdosik, Acuity
Representatives using products successfully**

Join a panel of industry professionals as they explore innovative technologies and proven strategies for improving fleet and driver safety. From telematics to training, discover how organizations are enhancing safety, reducing risk, and protecting their drivers on the road.

**PFAS: The Emerging Hazmat Challenge in Workplace and Environmental Safety
Representative from Clean Harbors**

PFAS—often called “forever chemicals”—are a growing concern in both occupational and environmental safety due to their persistence, potential toxicity, and widespread presence in workplace settings. PFAS litigation is rising, and public awareness is driving calls for accountability from organizations using or disposing of PFAS-containing materials. What you need to know and when to call in professionals to keep your workforce and workplace safe.

Safety & HR: The Ultimate Power Couple in the Workplace

Domini Montgomery, *Director Safety & Risk Management, Saint Louis Zoo*

Katie Rowland, *Human Resource Manager, Saint Louis Zoo*

This presentation highlights the importance and benefits of a strong relationship between HR and Safety departments, emphasizing that collaboration leads to success for everyone. We'll explore situations where Safety and HR intersect, and how understanding each other's roles fosters a positive culture while ensuring employee safety and well-being.

Safety Management Through the Lens of Technology

Rob McKinney, *Construction Safety Advocate*

Safety management on construction projects has evolved in parallel with the evolution of mobile technology. The traditional workflows of documenting safety meetings, inspections and accident reports continue to move from paper-based forms to real-time, cloud data that enhances accountability and reporting. In this presentation, Rob McKinney will explore the use of new technologies such as BIM for hazard recognition, Virtual Reality for training, Apps to improve mental fitness, and software that can increase safety performance. Learn about the best practices in using technology to improve safety management programs on the job site and at the office and how you can draft a plan to fit your company's objectives.

**Last Call for Exhibitor Viewing: 2:00 p.m. — 2:30 p.m.****Closing Session: 2:30 p.m. — 3:30 p.m.****ASK THE SAFETY PROFESSIONALS PANEL:**

Moderator: John Mundwiller, Amazingma Safety

SAFETY: Cedric Bransford, CSP, EHS Manager, Mechanical Dynamics & Analysis

INDUSTRIAL HYGIENE: Rachael Eddings, MPH, CSP, Sr. Scientist – Occupational & Residential Exposure, Bayer Crop Services

OSHA: Bill McDonald, CSP, OSHA Area Director, Greater St. Louis

LEGAL: Julie O'Keefe, Partner, Armstrong Teasdale LLP

Join our expert panel for an engaging, interactive session focused on your most pressing safety questions. In early September, we'll distribute a short survey to capture the challenges and topics that matter most to you—so our panel can tailor the discussion to what's trending in your world.

Thank You For Attending

Certificates with CEU's listed will be EMAILED TO YOU after the CONFERENCE

October 7, 2025 Conference Registration

Early Bird \$200.00 (through August 22nd)

Registration: \$225.00

Conference Walk-in Registration: \$250.00

Cancellation Policy: A full refund, less a \$50 processing fee per registration, will be granted if notification is received prior to October 1st. All cancellations made after October 1st are subject to full conference fees. Substitutions are honored at any time.

Company Name _____ Company Size _____
Name _____
Job Title _____ Type of Business _____
Address _____
City, State, Zip _____
Phone _____ Cell Phone _____
Email _____ Special Accommodations: _____

To ensure space availability,
Please select **one** topic for **each**
session for each attendee.

Session I:

- ☐ Aging Workforce
- ☐ Controlling High Energy
- ☐ Lithium-Ion Batteries
- ☐ Horseplay Injuries
- ☐ Demo: Fall Protection

Session II:

- ☐ Outdoor Work, & Dangerous Weather
- ☐ Safety: Field and Public Workspaces
- ☐ What is Your EAP?
- ☐ Women at Work
- ☐ Demo: Ladder Safety

Session III:

- ☐ Pulling Back the Curtain: Fall Protection
- ☐ Recovery Friendly Workplace
- ☐ Safety Professional Reality
- ☐ Selling Safety Across Sectors
- ☐ Demo: Forklift Safety

Session IV:

- ☐ Fleet Safety
- ☐ PFA's Emerging Hazmat Challenge
- ☐ Safety & HR: A Ultimate Power Couple
- ☐ Safety Through the lens of Technology

If you are attending the conference and paying with a
credit card, please complete the online registration form at:

<http://www.stlsafety.org/conference-registration>

OR FOR MORE INFORMATION >>>



If you are attending the conference and paying with a
company check, please contact:

accounting@stlsafety.org



**THE 22ND ANNUAL
GREATER ST. LOUIS
SAFETY & HEALTH CONFERENCE**
TUESDAY, OCTOBER 7, 2025

**Unemployed Environmental Safety and Health
Professionals may attend the conference at no charge.
Safety and Health College Students may attend the
conference at no charge.**
Please call (314) 621-9200 for details.

Thank You!

